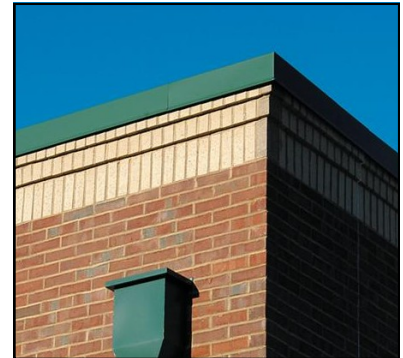




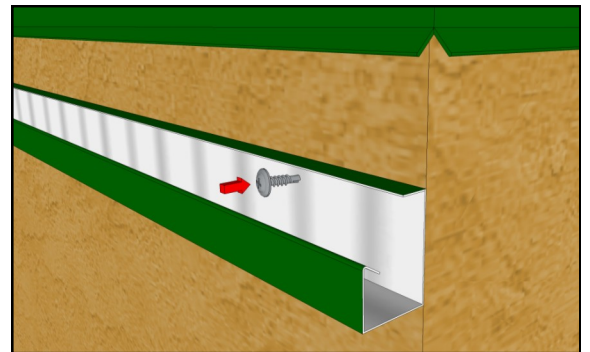
Soffit-less (Parapet or vertical) Installation

For areas that do not have a soffit or commonly found in commercial applications. Our “Deck Channel with Drip Cover” is best. This channel has a small lip that is bent inside the channel to allow for multiple installation options. With the drip cover, this system will have a seamless look to the building. While keeping with the water shedding capabilities.

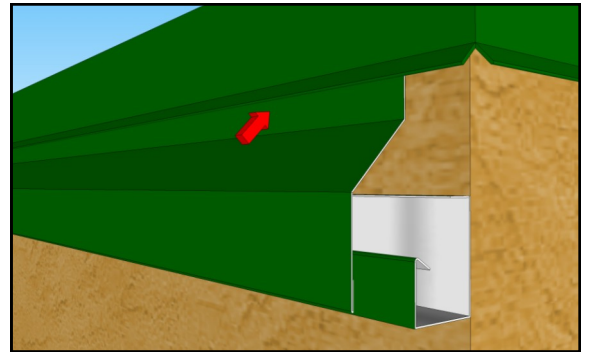


How this installs...

1. Align the channel to the appropriate area to ensure a level and proper look. This area may be below the gutter or below the drip edge / parapet cap. Attach the channel with self-piercing screws through the back of the channel as shown in the diagram. Ensure height of the channel installed has sufficient room to allow for the cover to attach properly.



2. With the channel secured into place. Insert all diodes and electronic wires and test system. Using our Deck cover with Drip, place the cover directly over the front creating a new outward face for the Trimlight system. The upper lip of the cover should be resting behind the existing drip edge, back of the gutter, or parapet cap. This should give the system a seamless look without the potential of water shedding issues.



3. In order to hold the deck cover in place. Use small self tapping or self piercing screws (1/4" or 3/8") to hold the deck cover to the channel. Insert the screw between diodes to ensure no screws penetrate into a diode.

Once cover is fully installed. Use touch-up paint to paint the screw head to give a clean installed look.

Depending on the application, a second screw may be needed to hold the upper lip into the structure where the cover meets the drip edge or gutter.

